

Introducing COMMANDbatch...

Are you ready for the next generation of batching controls? COMMANDbatch™ is a new batching system that incorporates the latest technologies into your batch plant. We have taken the best features from our Eagle, Spectrum and AC2000 line of batching controls and integrated them into a graphical interface driven by Microsoft Windows XP®.

Integration with ease - COMMANDbatch uses Microsoft's MSDE database, or optionally, a full-scale SQL Server™ database. Using industry standard SQL Server™ technology allows the system to store large amounts of historical business and batch process data for later analysis. This database makes it easier to integrate COMMANDbatch with COMMANDseries™ and allows the user to modify COMMANDbatch's standard reports.

The best just got better

The same information found in our other batching products can be found in COMMANDbatch, in an easier to read format and all at the click of a mouse.

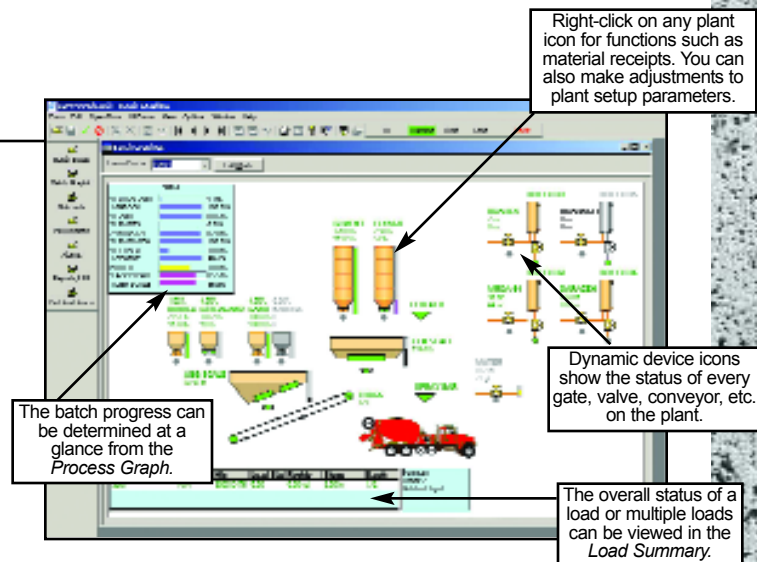
Improved screen navigation - No more digging into text driven menus and searching through the many rows and columns of text to obtain your information. COMMANDbatch has the ability to jump from one screen to the next and has configurable menu buttons that give the user a way to access commonly used screens with a single click of the mouse. An optional dual-monitor feature allows users to view plant status on one monitor, while entering orders and setting up batches on another.

Generate your own reports - Users can create and export their own reports with the built-in report generator feature or by using common programs such as Microsoft Excel® and Access®.

Money saving technology - Storing large amounts of historical data could be the diamond in the rough that saves you money. The benefit is

Easy to read graphical design - COMMANDbatch's graphical interface gives the batch operator a means to determine plant status at a glance. On-screen icons representing your bins, scales, conveyors and other plant equipment are positioned similarly to the way your plant is laid out.

Icons visually indicate whether the equipment is running, idling or stopped. They are accompanied by added information such as target and actual batch weights. Through this unique graphical interface, the operator can quickly locate the plant area of interest and determine the status of the batching process.



twofold. First, the use of historical batch result data, along with our newest batching algorithms, offers the industry's best method for fast batching with less jogging. Second, you may want to compare current concrete production, sales volume or material usage with an equivalent period from a previous month or year. By monitoring these trends, you can make more realistic business plans by comparing actual vs. theoretical material usage over a period of time, saving money by spotting deterioration in plant performance that might otherwise go unnoticed.

The benefits of Windows®

Command Alkon has made the transition to a Windows based batching system for a number of reasons. Providing modern computing technologies to our industry is at the top of the list. Many recent technological innovations cannot simply be added onto existing systems because they affect the very foundation of the systems and the way operators use them. The COMMANDbatch approach allows us to not only deliver today's technology to the producer, but also provides the foundation upon which the system can be enhanced.

Windows and related technology provides major benefits in many areas - ease of use, familiarity and connectivity - to name a few. Windows is easier to use than text-based systems. An intuitive, graphical design makes training new employees easier and reduces job stress. Most producers already have a workforce familiar with Windows operation and maintenance; furthermore, features such as networking make it easy to add user workstations to the system and facilitate connection to other systems.

Flexibility

The use of programmable sequences to control interactions between batching steps gives COMMANDbatch™ the flexibility to handle almost any control situation.

The start of each step, such as the feed of a particular material or the discharge of a scale, can be defined in terms of the status of other steps in the process. For example, the aggregate scale can be programmed to discharge when a certain amount of water has been discharged (with or without regard for cement and admixes), or cement can be programmed to wait until a certain amount of water and aggregate have discharged.

Any number of separate sequences can be developed and saved for use with special situations such as grout mixes or trucks with unusual loading characteristics.

Flexibility in the sequence approach allows the system to accommodate atypical batch plant designs without factory programming. Additional devices such as diverter valves and flop chutes can be controlled with their own sequence steps. COMMANDbatch easily handles features such as slurry mixers and traveling aggregate hoppers.

Security

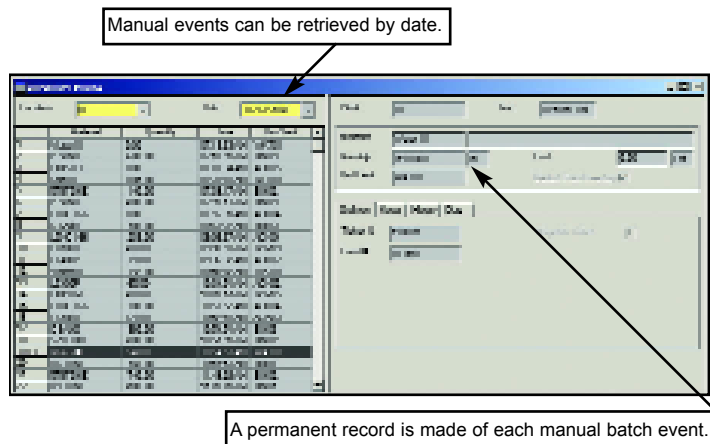
COMMANDbatch is designed with a superior security model that requires user access via encrypted passwords and allows configuration of Delete, Edit, Execute, Insert, Read, Update, and Bulk Update privileges. Security is configured by user or user groups and can be defined at the form level or all the way down to each field on every form, providing the most advanced system security access to date.

All data modifications are time stamped with the user name, allowing for better auditing of changes to key information such as Mix Designs, Materials, Customer Files, Pricing, and Inventory Adjustments.

When manual batching occurs, each event is stored and can be retrieved showing time, date, material, amounts and which load was affected.

An independent real-time control processor maintains tight control of the plant during automatic batching and monitors manual activity regardless of the state of the Windows® computer.

All system alarms are stored and can be easily retrieved to show the alarm type, time, date, which load may have been affected and which user acknowledged the error. You can feel confident knowing that your batch system has the highest level of security.



Seamless integration

Connecting to COMMANDbatch and its centralized database with standard networking technology makes it easy for multiple users to accomplish their individual tasks simultaneously.

QC and credit personnel can update mix designs and customer credit status at the same time that orders are being entered and loads are being batched.

COMMANDbatch has been designed to facilitate a high level of integration with other Command Alkon COMMANDseries™ products. The internal data structures of COMMANDbatch are aligned with those of COMMANDconcrete and

COMMANDconcrete 1. This high degree of symmetry between the two designs will ultimately allow the systems to automatically synchronize data.

Our initial release of COMMANDbatch supports all of the dispatch links provided by existing Command Alkon products, and enhancements will offer even tighter integration in areas such as credit control, inventory, invoicing and order entry.

The batch computer is no longer an isolated piece of equipment located in the batch house. Instead, it is poised to become an integrated part of a producer's enterprise-wide information system.

Order Entry

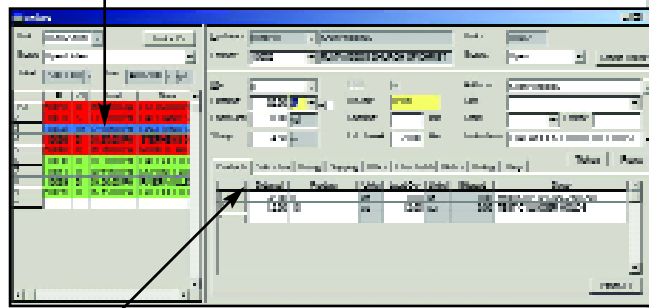
Can't yet justify a full-blown dispatch system? The optional COMMANDbatch™ Order Entry system is designed for the small, growing producer or remote site that needs to automate both the plant and the order-taking function. More than just a ticket typing system, this is a full-featured Order Entry system with advanced features such as Projects and multi-tiered pricing. Other features include:

- Unlimited number of Customers, Projects, Orders, Products, and Products per Project/Order.
- Programmable Customer Credit Statuses with limits and automatic notifications to warn of customers with suspect credit.
- Programmable Price Levels and Discounts per Customer, Project, Order, and Product.
- Programmable auto addition of charges such as Minimum Load Charge, Saturday Delivery Charge, and Seasonal Charge by Customer, Project and Order.

- Optional interface to Microsoft MapPoint® pinpoints delivery locations and prints travel directions for your drivers.

COMMANDbatch's screens are designed so that a sole operator can efficiently enter orders and control batching from a single workstation. As your business grows, workstations can be added to accommodate additional order takers.

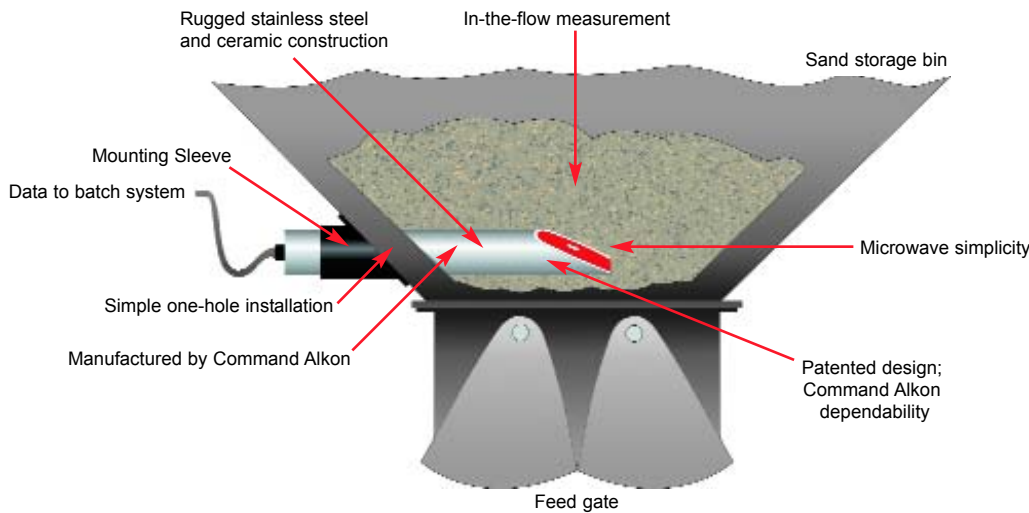
Color-coded Order Index keeps track of orders to load and highlights "will call" and problem orders.



A number of extra products can be added to the Orders screen. Powerful Price, Quantity and Sales Tax options provide flexibility while making the system easy to use.

Increase product quality and save money

Typical Installation of Microwave Probe



There is a simple and inexpensive way to save more money. Measuring the moisture content of your aggregates as they flow into a batch has proven to dramatically increase product quality and finish, reduce overall loading times and reduce the number of times you dry up loads; this in turn, saves you money! This is how it works...

The Command Alkon Moisture Probe uses microwave technology to measure moisture content in fine aggregates. A continuous field of microwave energy is directed outward from the sensing end of the probe.

Microwave energy is absorbed by moisture in the material in direct proportion to the moisture present in the material. The probe measures this amount of absorbed energy and converts it to a moisture value. The probe can be mounted directly through a steel bin wall, without the measurement being influenced by the steel.

The Command Alkon moisture probe has the industry's reputation for being the most durable and accurate probe on the market. When integrated with COMMANDbatch, you'll be amazed by the return on your investment.

Remote users/batching

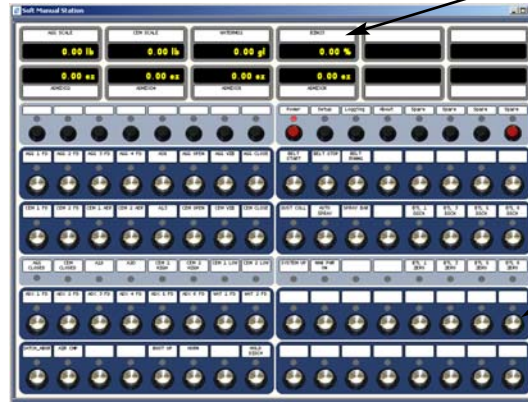
COMMANDbatch's remote access technology allows for Order Entry, Dispatching, Mix Management, Inventory Control, Customer Credit and Account Control, Pricing, Historical Data retrieval (batch weight lookups), System Administration, and even Batching to be performed or monitored throughout your organization

COMMANDbatch's client/server design allows multiple users to access the system simultaneously. Using a LAN, WAN, or VPN connection, COMMANDbatch™ can be used from almost anywhere, while the built-in user based security module prevents unauthorized access. COMMANDbatch allows for any user with the appropriate security privileges to use any part of the system regardless of other users' whereabouts. The system ensures data integrity, while providing the access required in today's business environment.

The Remote Batching feature allows lower volume or end-of-the-day batching duties to be performed from a remote location. Since safety is a primary concern, the remote batching feature has a Driver Authorization HMI (Human Machine Interface) integrated into the batching process.

COMMANDbatch identifies that a remote user has initiated the batching process, which triggers the proper batch sequences required to enforce local plant authorization prior to the plant beginning the automatic batch process.

COMMANDbatch also has an integrated Soft Manual Station, allowing remote users to perform manual functions as if they were at the COMMANDbatch's manual panel. To address safety concerns, certain plant functions are disabled at the remote location.



Scale, meter, and moisture probe displays show "live" values on the screen.

Push buttons and indicator lamps match those on the manual station at the plant.

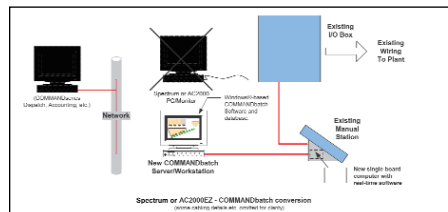
The Soft Manual Station gives you manual control of almost every plant function from a remote computer workstation.

Converting to COMMANDbatch

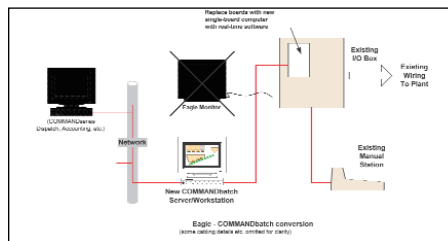
Command Alkon values our long-term relationship with the loyal owners and operators of our Spectrum, Eagle and AC2000 systems. We understand the large investment that has been put into these systems and the importance of maintaining that investment.

It is also reasonable to expect that owners of existing systems would ultimately want to take advantage of the new features of COMMANDbatch. With this in mind we have established a way to preserve a major portion of the producer's investment when converting to COMMANDbatch. The conversion kit makes use of the existing plant wiring box, and for most models, the manual panel. As a result, plant downtime during the conversion is minimized. Conversions are available for most existing Eagle, Spectrum and AC2000 product lines.

Some users of Command Alkon batching products will need additional training when converting to COMMANDbatch. Users having experience with Windows® and an existing batching system could learn to run COMMANDbatch within a day or two, depending on the configuration purchased. A plant "tune-up" session can also be scheduled at the same time to maximize your plant performance.



Hardware/Software Conversion process
Spectrum or AC2000 to COMMANDbatch™



Hardware/Software Conversion process
Eagle to COMMANDbatch™

COMMANDbatch comes with a standard one-year Priority Support Agreement that includes: 24/7 telephone support, software support and hardware replacement. A support agreement for subsequent years after the first year of service is available for purchase at an additional cost.

Options and Features

Standard Features

- Two base models, RM100 and RM200
- EZ-Cal Manual Control Panel with (7) Independent Digital Readouts
- Fastbatch™
- Over and Under Tolerance Interlocks
- Scale Zero and Bottle Empty Interlocks
- Scale Rate of Discharge
- Selectable Ticket Formats
- Automatic Scale Tolerance Checking
- Manual Batch Weight Recording
- U.S./Metric software
- User based customizable shortcut menus
- Unlimited number of plant graphic scenes, allowing different views and user based preferences
- Additional Controls for: Conveyor Manual Start/Stop Switch, Conveyor Discharge Interlock, Aggregate Scale Automatic Vibrator Control, Cement Scale Automatic Vibrator Control, Air Compressor, Cement Automatic Aerations
- Easy to access batch record and ticket retrieval
- Full featured standard reports including:
 - *Average Moisture*
 - *Calibration Event*
 - *Customer Listing*
 - *Incoming Inventory*
 - *Material Inventory*
 - *Material On Hand*
 - *Material Usage*
 - *Mix Design Listing*
 - *Mix Design Summary*
 - *Mix Production*
 - *Order Details*
 - *Order Summary*
 - *Product Listing*
 - *Product Sales*
 - *Project Listing*
 - *Projects By Customer*
 - *Ticket By Customer*
 - *Ticket Details*
 - *Ticket Summary*
- Built-in Report Writer
- Network laser printer interface - send your reports directly to the boss's printer
- Multiple printer support
- Unparalleled Security module allowing User and User Group configuration down to the field level on all forms
- Available in Spanish and other languages

Unlimited Expandability

- No limits on number of Mix Designs, Materials, Other Products, Customers, Projects, Orders and Tickets
- Multiple plant controls on a single database with each plant having:
 - Up to 12 Aggregate Bins with up to 12 Automatic Moisture Probes
 - Up to 8 Cement Silos
 - Up to 4 Water materials
 - Up to 20 Admixture Controls
 - Up to 4 Central Mixers
 - Unlimited number of batching sequences

- Up to three EZ-Cal manual control panels per plant each with:
 - Up to 12 simultaneous scale/meter/Moisture Probe displays
 - Up to 64 configurable switches
 - Up to 16 indicator lamps
 - Built-in Load Cell self test

Optional Features

- Order Entry/Delivery Ticket Printing with Projects
- Additional Users - both local and remote connectivity available
- Remote Batching with integrated Soft Manual Station
- Additional monitors, any size available to allow for extra workspace
- Ticket Data Exports for automatic interface to accounting systems
- Truck Call Board Interface
- Dispatch Interface - bi-directional data transport including mix design download, ticket, incoming material receipt and batch weight upload
- Weighed water control
- Water holding tank with selectable holdback
- Weighed admixtures
- Additional weigh batchers for aggregate, cement and water
- Pre-wired plant control wiring harnesses
- Recycled "gray" water calculations
- Automatic load status to dispatch

Batching Accuracy and Speed

- Multiple Feed Types including fast, timed, and jog cycles
- Historical trend monitoring to determine optimum feed rate and freefall compensation based on material, device and target amount parameters
- Self-adjusting timed feed and jog time parameters
- Programmable discharge rates based on truck and batch sequence with live manual adjustments and overrides
- Unlimited number of batch sequences that can be tied to Mix Designs that require special plant functions
- Maximum single batch size per plant, per truck, per scale or admixture bottle capacity, or per mix design
- Allows manual control when they do not contend with weighing process
- Allows on-the-fly truck number and discharge rate adjustments, allowing for corrections while batching
- Integrated Ticket Stack on the Batch Setup form allows for the next batch to be prepared while batching and shows all active tickets at a glance

www.commandalkon.com

Microsoft is a registered trademark of Microsoft Corporation in the United States and other countries

Birmingham, Alabama, USA Headquarters:

1800 International Park Drive
Suite 400
Birmingham, AL 35243
+1 (205) 879-3282
or +1 (800) 624-1872
Fax: +1 (205) 870-1405

Columbus, Ohio, USA

5168 Blazer Parkway
Dublin, OH 43017-1339
+1 (614) 799-0600 or
+1 (614) 799-6650
Fax : +1 (614) 793-0608
Batch Services Dept.
+1 (800) 331-7705

Australia

Level 1, Ste 5, 695 Burke Road
Hawthorn East
Victoria, Australia 3123
PO Box 191, Camberwell
Victoria, Australia 3124
Office: 011-61-3-98-617-900
Fax: 011-61-3-98-617-915

UK

21 St. Anne's Rd.
St. Anne's Park
Bristol
BS4 4AB, UK
+44-117-972-4777
Fax: +44-117-972-4888